

# BALANCED SHADE MANAGEMENT

## **CLEARFIL MAJESTY™ ES-2**

A composite with exceptional aesthetics  
and economical value.



# IMAGINE A COMPOSITE CONCEPT WORKING FOR YOU

## JUST FOCUS ON WHAT YOU LOVE TO DO

When you start working with the new universal composite CLEARFIL MAJESTY™ ES-2 something surprising happens. Imagine restoring a Class III cavity with a composite resin. Layering difficulties? You just copy nature's enamel and dentin layers with **Premium** enamel and dentin shade. Limited time? You can also choose a one layer **Classic** shade. To create the perfect adaption to the tooth we further optimized the paste consistency. This will give you great confidence during layering. When finished, you will be simply amazed by the blending effect.

## WORLD'S FIRST SHADE CONCEPT

### Seven years of re-engineering every detail.

You can experience this unique restorative workflow from the first restoration onwards. The world's first shade concept for direct composites is made possible by only three components: one-layer **Classic** shades, multi-layer **Premium** shades (with enamel, dentin and translucent shades) and an intuitive shade guide, all approved by VITA™.

During the last seven years we re-engineered every detail, making your restorations beautiful, more predictable and longer lasting. By introducing CLEARFIL MAJESTY™ ES-2, we may have created a new gold standard.



## INTUITIVE SHADE SYSTEM

### Calibrated in line with the VITA™ standard.

Choosing the right shade was never more precise. With CLEARFIL MAJESTY™ ES-2, the world's first brightness-based shade system for direct composites is being introduced – all approved by VITA™. This approach is key in achieving a natural look for your restorations.

Choosing the right shade is carried out within seconds from 6 tabs only. The tabs are arranged from light to dark (White to A4) to give you the highest shade precision possible. If you select A2 group, you can immediately start working with our **Premium** A2E (enamel) and A2D (dentin) shades. If you prefer the one-shade technique, you first select the A2 group and then choose the best matching **Classic** shade D2, A2 or C1 in a second step.

Never before has a shade guide been so compact, with 18 **Premium** shades, including 7 enamel, 7 dentin and 4 translucent shades. Add to that the 18 **Classic** shades and you have a total of 36 shades that easily fit in your pocket.

## TWO STEPS IS ALL IT TAKES

### Step 1 – Select brightness

Select the closest brightness tab from six exposed tab options of the Shade Guide.

### Step 2 – Select hue and color saturation

Pull out the chosen tab from the shade holder and select the corresponding shade.



## DUAL-LAYERING WITH FIXED SHADE COMBINATIONS

CLEARFIL MAJESTY™ ES-2 Premium will make your restorations a predictable success, thanks to the fixed shade combinations of Dentin and Enamel.

The shade-matching ability of CLEARFIL MAJESTY™ ES-2 Premium covers a group of shades through the fixed shade combination of D + E. CLEARFIL MAJESTY™ ES-2 Premium is a composite with a unique shade concept “approved” by VITA™.

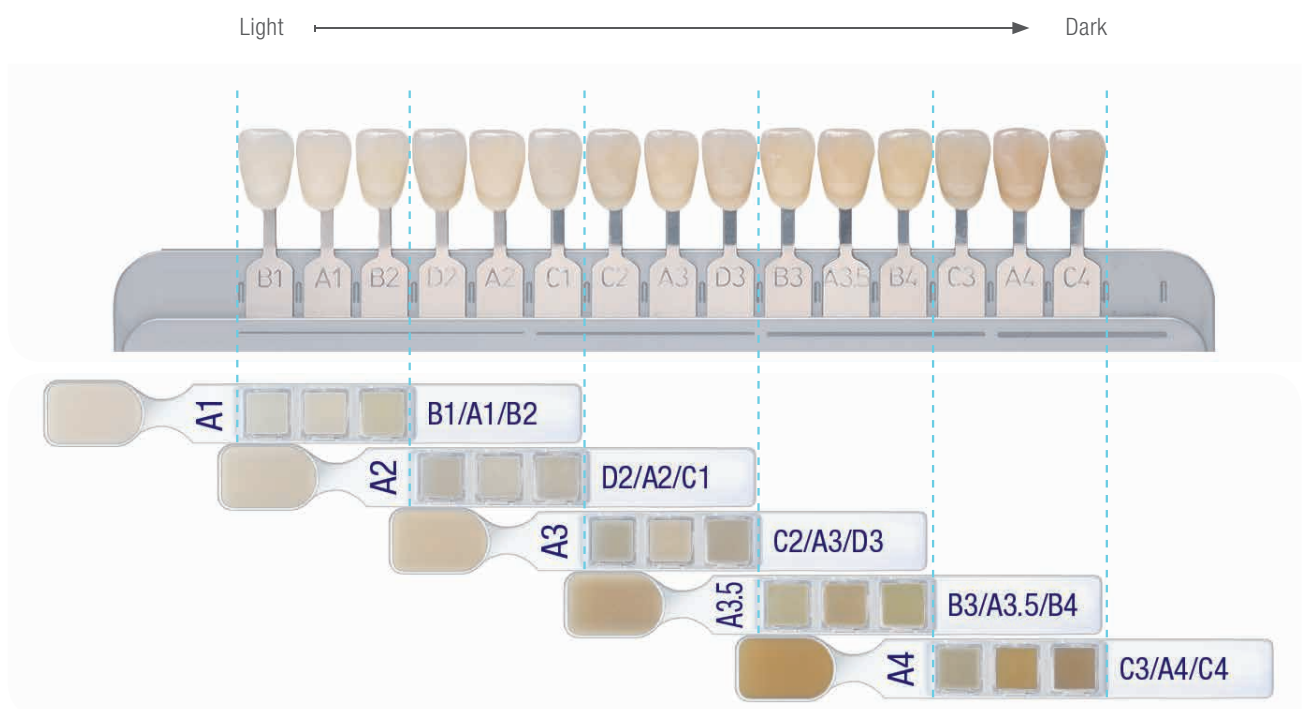


## IMPRESSIVE SHADE COVERAGE

### One Premium shade combination now covers three VITA™ Classical shades.

It's hard to believe, but with our esthetic composite concept you are also able to cover three VITA™ shades with just one **Premium** enamel and dentin shade combination, such as A1E and A1D. This is possible due to the creation of brightness-based shade groups based on three shades.

If you match three teeth in the A2 group in a week, you can use A2E and A2D to restore a C1 tooth on Monday, perhaps a D2 tooth on Wednesday and an A2 tooth on Thursday. Isn't that just unbelievable? And you do not need any complicated shade recipe to make it happen. Just copy nature's two layers.

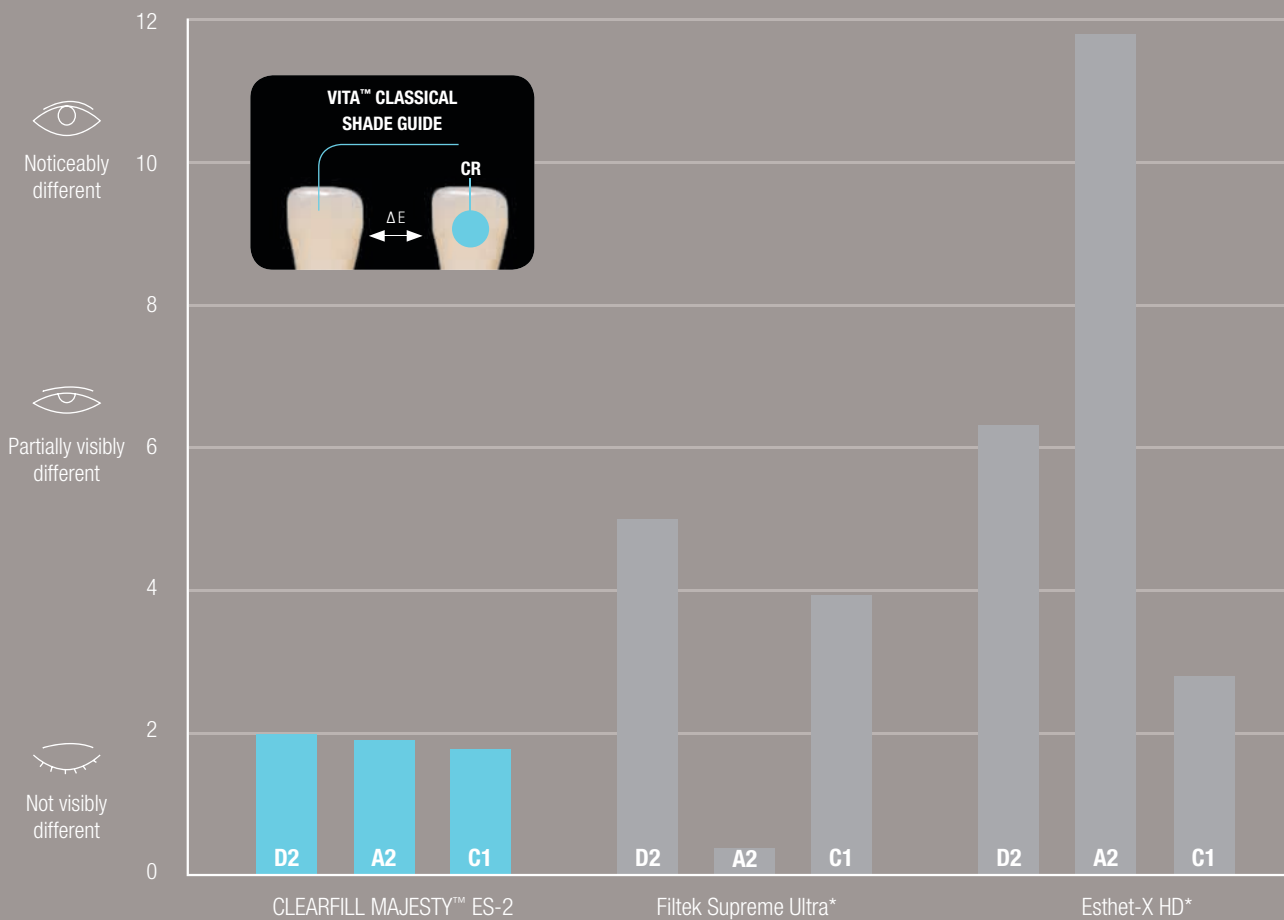


## HERE'S THE PROOF

### Harvard School of Medicine put our concept to the test.

In their study, headed by Dr. Nagai, the centers of three VITA™ Classical Shade Guide tabs (D2, A2, C1) were restored according to the shade instructions of three manufacturers. With the A2E and A2D shade combination, Kuraray Noritake Dental's CLEARFIL MAJESTY™ ES-2 proved to match not only the A2 shade but also the D2 and C1 shades. All three tabs, restored with CLEARFIL MAJESTY™ ES-2, showed no visible difference to the original VITA™ tab.

### COLOR DIFFERENCE ( $\Delta E$ ) BETWEEN FILLED AND ORIGINAL VITA™ CLASSICAL SHADE GUIDE TAB



**Note:** Some manufacturers' recipes require up to three different shade combinations for each separate VITA™ shade. CLEARFIL MAJESTY™ ES-2 matches all three VITA™ shades with only one Premium shade combination (in this case A2E and A2D).

\* Not a trademark of KURARAY CO., LTD.

Source: Dr. Shigemi Nagai, Harvard School of Dental Medicine, United States

## DESIGNING NATURE

### **Anatomical layering with Premium enamel and dentin shades.**

Experience the intuitiveness of our composite concept. You can start immediately without having to pay attention to difficult color schemes or complicated instructions. The only thing you need to do is to copy nature's enamel and dentin layers. Start designing nature with your selected Premium shades. Just focus on what you love doing!

Let's see how Dr. Hirofumi Tashiro can instinctively make a Class IV restoration on tooth 21. First, he removes the old restoration and makes his preparation. He chooses the right shade with the VITA™ Classical Shade Guide and selects A2. For anatomical layering, he works with A2E (enamel) and A2D (dentin). In this case he uses a silicon guide to construct the palatal enamel as a first layer. The internal dentin (A2D) is placed on top, followed by the enamel (A2E) outer layer. When finished, you can see the blending result.

## BEST BLENDING INTO NATURE

### **Brightness, anatomical layering and Light Diffusion Technology do the work.**

Having been inspired by the clinical case, imagine you order your first shades. When you have then completed your first restoration you will probably think "wow, this looks really good. I can't see the enamel-composite border anymore".

How is that possible? Let's discover the three underlying ideas.



Source: Dr. Hirofumi Tashiro, Japan

## 1. FROM LIGHT TO DARK

### Why focus on brightness?

Intuitive is what we like to call our new brightness-based shade system. Why brightness? That's because 90% of a shade, consisting of the shade dimensions "brightness", "hue" and "color saturation", is determined by brightness. What does the color range of natural teeth worldwide look like? From a VITA™ study about color range, each shade is spread more widely in brightness than in hue and color saturation. The natural brightness differences are the reason behind the elliptical shape. Now you see why you should get the brightness right.

## 2. CREATE NATURAL DEPTH

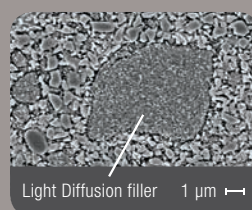
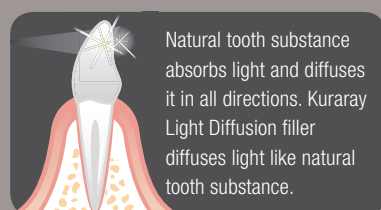
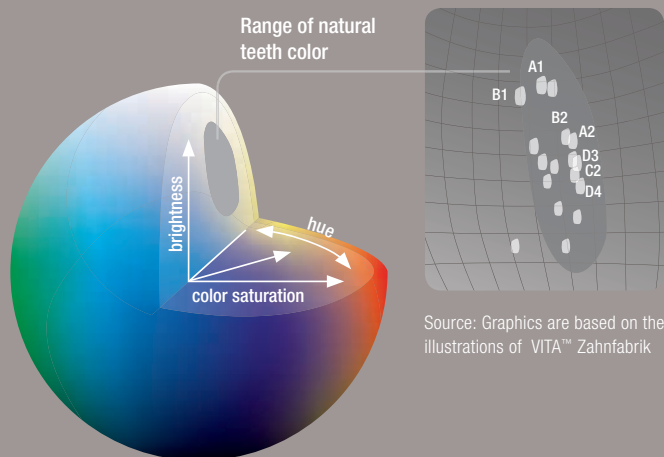
### Predetermined enamel translucency and dentin opacity.

Surprisingly, opacity is an underestimated factor for successful tooth-composite-integration. Without the right opacity, the restoration will not match. The new CLEARFIL MAJESTY™ ES-2 was designed with a predetermined enamel translucency and dentin opacity. You only have to copy the natural thicknesses and replace enamel and dentin with our Premium shades.

## 3. A "MARRIAGE" OF COMPOSITE AND NATURE

### Light Diffusion Technology adjusts hue and color saturation.

Once the right shade has been chosen and the opacities predetermined, the Light Diffusion Technology adds the finishing touch. It adapts the right hue (e.g. yellow or red) and color saturation to the surrounding tooth tissue. This technology makes it possible to get very close to natural dentin and enamel light effects.



Source: Dr. Toshimoto Yamada, DDS, PhD, Toranomon Hospital, Japan.



## BUILT-IN SHADE TECHNOLOGIES

Make your shades shine.

### Natural fluorescence

Natural fluorescence light effects are included.

### Natural opalescence

Our Translucent shades, Clear, Amber, Blue and Grey, show nice opalescent effects. They help you to characterize your restorations at an advanced level.

### Constant color

The shades of CLEARFIL MAJESTYTM ES-2 stay virtually the same before and after polymerization.

## BUILT-IN HANDLING TECHNOLOGIES

Make your day in the clinic.

### Universal use

CLEARFIL MAJESTYTM ES-2 is a nano-hybrid composite, ideal for anterior and posterior use including 66 vol% (78 wt%) filler.

### Dentin paste handling

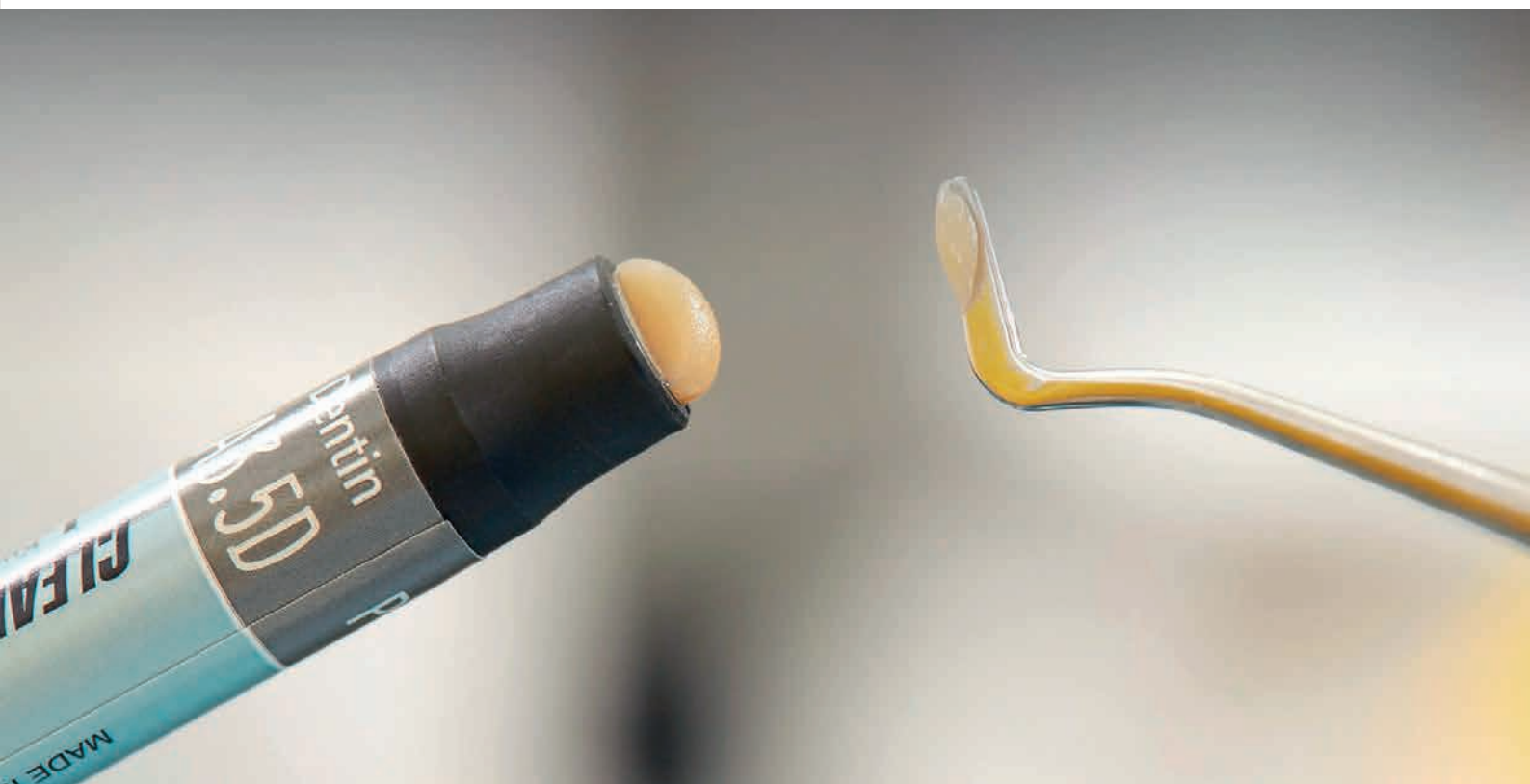
In order to make the paste non-sticky, we optimized the monomer type and composition. You can decide where the paste needs to go.

### Enamel paste viscosity

The enamel paste viscosity was designed to work very precisely. Adapting the enamel paste to a prepared bevel or cervical dentin can be done with your modeling instrument or brush.

### Long working time

CLEARFIL MAJESTYTM ES-2 has a very long working time of 4.5 minutes under ambient lighting. Even if you keep your operating light on the restoration, you will have enough time to layer the paste.



## ORDER INFORMATION

### Kit



#### #3010-EU Syringe Professional Kit

Classic A1, A2, A3, A3.5, Premium A1E, A2E, A3E, A3.5E, A1D, A2D, A3D, A3.5D:  
1 syringe per shade (3.6g/2.0ml) + Clear, Amber, Blue, Gray  
1 syringe per shade (1.8g/0.9ml) + Shade Guide



#### #3100-EU PLT Professional Kit

Classic A1, A2, A3, A3.5, Premium A1E, A2E, A3E, A3.5E, A1D, A2D, A3D, A3.5D,  
Clear, Amber, Blue, Gray:  
5 tips per shade (0.25g) + Shade Guide



#### #3012-EU Syringe Introductory Kit

Classic A2, Premium A2D, A2E:  
1 syringe per shade (1.2g/0.7ml)



#### #3102-EU PLT Introductory Kit

Classic A2, Premium A2D, A2E:  
5 tips per shade (0.25g)

### Shade Guide



#3000-EU Shade guide  
All shades



#3001-EU Shade guide compact  
A1, A2, A3, A3.5, A4, B1, B2, B3, B4,  
C1, C2, C3, C4, D2, D3, XW, W

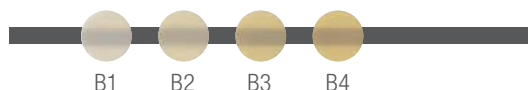
### SYRINGE AND PLT REFILL CLASSIC\*



A1 A2 A3 A3.5 A4 A6

Syringe #3020-EU #3021-EU #3022-EU #3023-EU #3024-EU #3025-EU

PLT #3110-EU #3111-EU #3112-EU #3113-EU #3114-EU #3115-EU



B1 B2 B3 B4

Syringe #3026-EU #3027-EU #3028-EU #3029-EU

PLT #3116-EU #3117-EU #3118-EU #3119-EU



C1 C2 C3 C4

Syringe #3030-EU #3031-EU #3032-EU #3033-EU

PLT #3120-EU #3121-EU #3122-EU #3123-EU



D2 D3 XW W

Syringe #3034-EU #3035-EU #3036-EU #3037-EU

PLT #3124-EU #3125-EU #3126-EU #3127-EU

### SYRINGE AND PLT REFILL PREMIUM\*\*

#### Dentin

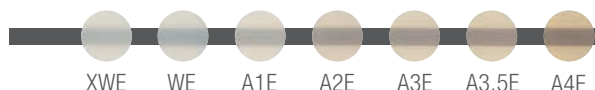


XWD WD A1D A2D A3D A3.5D A4D

Syringe #3062-EU #3063-EU #3057-EU #3058-EU #3059-EU #3060-EU #3061-EU

PLT #3152-EU #3153-EU #3147-EU #3148-EU #3149-EU #3150-EU #3151-EU

#### Enamel



XWE WE A1E A2E A3E A3.5E A4E

Syringe #3055-EU #3056-EU #3050-EU #3051-EU #3052-EU #3053-EU #3054-EU

PLT #3145-EU #3146-EU #3140-EU #3141-EU #3142-EU #3143-EU #3144-EU

#### Translucent



Clear Blue Gray Amber

Syringe #3064-EU #3066-EU #3067-EU #3065-EU

PLT #3154-EU #3156-EU #3157-EU #3155-EU

The colors of the actual shade guide may deviate from the printed colors.

\* Each Classic syringe refill contains 3.6g/2.0ml and each Classic PLT refill contains 20 tips x 0.25g.

\*\* Each Premium dentin and enamel syringe refill contains 3.6g/2.0ml and each Premium translucent syringe refill contains 1.8g/0.9ml. Each Premium PLT refill contains 10 tips x 0.25g.



